



PAMBASANG PUNONGHIMPILAN TANOD BAYBAYIN NG PILIPINAS
(National Headquarters Philippine Coast Guard)
139 25th Street, Port Area
1018 Manila

12 July 2023

NHPCG/HMSSC

MEMORANDUM-CIRCULAR
NUMBER.06-23

“Establishing the Pakiputan Strait and Northern Samal Island Davao Traffic Separation Scheme (PSNSTSS) and Prescribing the Rules for its Use”

I. AUTHORITY:

- A. Republic Act 9993 (The Philippine Coast Guard Law of 2009) and
- B. Implementing Rules and Regulations Republic Act 9993

II. REFERENCES:

- A. Philippine Coast Pilot, 6th Edition, 1995;
- B. International Convention for the Safety of Life at Sea;
- C. Convention on the International Regulation for Preventing Collision at Sea;
- D. IMO Ship’s Routing System;
- E. International Association of Marine Aids and Lighthouse Authority (IALA); and
- F. National Mapping and Resource Information Authority (NAMRIA) (Chart No. 4624, 4656)

III. PURPOSE:

This Memorandum Circular establishes the Pakiputan Strait and Northern Samal Island Davao Traffic Separation Scheme (PSNSTSS) and prescribes the rules and regulations to be adhered to and followed by vessels or ships.

IV. SCOPE:

This Memorandum Circular applies to all vessels or ships transiting the PSNSTSS.

V. DEFINITION OF TERMS:

A. Pakiputan Strait and Northern Island Davao Traffic Separation Scheme

An established route along the Pakiputan Strait – Northern Samal island with a separation zone indicating the inbound and outbound lane to be followed by all vessels transiting the area.

B. Traffic Separation Scheme

A routing measure aimed at the separation of opposing streams of traffic by appropriate means and by establishment of traffic lanes as adopted by IMO per Rule 10 of COLREGS.

C. Traffic Separation Zone

A zone separating traffic lane in which ships are proceeding in opposite or nearly directions or separating a traffic lane from the adjacent sea area or separating traffic lanes designated for a particular classes or ship proceeding in the same.

D. Traffic Separation Line

This is a line drawn in the midway of the imaginary lanes on the vessel TSS area.

E. Traffic Lane

A lane to be followed for the movement of vessel or ship travelling from one (1) destination to another as indicated in the TSS.

F. Inshore Traffic Zone

The designated areas between the landward boundary of a traffic separation scheme and the adjacent coast intended for local traffic or area outside the TSS lane.

G. Established direction of traffic flow

A traffic pattern indicating the directional movement of traffic as established with the traffic separation scheme.

H. Vessel or ship

This includes every description of propelled watercraft, including non-displacement craft and seaplanes, used or capable of being used as means of transportation on water.

I. Sailing vessel or sailboat

Any vessel or sailing boat under sails is not covered by this Circular provided that the propelling machinery is not being used and they shall not impede the safe passage of a power-driven vessel following the traffic lane.

VI. BOUNDARIES:

1. PAKIPUTAN STRAIT TSS

A. A Traffic Separation line is established by connecting the following geographical positions:

| | |
|-----------------------------|---------------------|
| Point (1) Lat 07° 01' 00" N | Long 125° 38' 12" E |
| Point (2) Lat 07° 06' 37" N | Long 125° 39' 41" E |
| Point (3) Lat 07° 07' 44" N | Long 125° 40' 11" E |
| Point (4) Lat 07° 10' 16" N | Long 125° 40' 10" E |
| Point (5) Lat 07° 12' 18" N | Long 125° 40' 57" E |

B. A traffic lane for inbound traffic with a width of 280 meters is established between the separation line and a line connecting the following geographical positions:

| | |
|-----------------------------|-----------------------|
| Point (A) Lat 07° 01' 00" N | Long 125° 38' 30" E |
| Point (B) Lat 07° 06' 37" N | Long 125° 39' 49" E |
| Point (C) Lat 07° 07' 44" N | Long 125° 40' 20" E |
| Point (D) Lat 07° 10' 12" N | Long 125° 40' 25.4" E |
| Point (E) Lat 07° 12' 12" N | Long 125° 41' 06" E |

C. A traffic lane for outbound traffic with a width of 280 meters is established between the separation line and a line connecting the following geographical positions:

| | |
|-----------------------------|---------------------|
| Point (A) Lat 07° 12' 24" N | Long 125° 40' 48" E |
| Point (B) Lat 07° 10' 20" N | Long 125° 39' 55" E |
| Point (C) Lat 07° 07' 50" N | Long 125° 40' 02" E |
| Point (D) Lat 07° 06' 37" N | Long 125° 39' 31" E |
| Point (E) Lat 07° 01' 00" N | Long 125° 37' 54" E |

2. Northern Samal Island TSS

A. A Traffic Separation zone is established by connecting the following geographical positions:

| | |
|----------------------------|---------------------|
| Point (1) Lat 07°10' 00" N | Long 125° 49' 46" E |
| Point (2) Lat 07°13' 58" N | Long 125° 47' 48" E |
| Point (3) Lat 07°14' 42" N | Long 125° 46' 31" E |
| Point (4) Lat 07°13' 43" N | Long 125° 41' 55" E |
| Point (5) Lat 07°13' 32" N | Long 125° 42' 00" E |
| Point (6) Lat 07°14' 28" N | Long 125° 46' 27" E |
| Point (7) Lat 07°13' 48" N | Long 125° 47' 38" E |
| Point (8) Lat 07°10' 00" N | Long 125° 49' 30" E |

- B. A traffic lane for inbound traffic with a width of 1.5 kilometers is established between the separation line and a line connecting the following geographical positions:

| | |
|-----------------------------|---------------------|
| Point (A) Lat 07° 10' 00" N | Long 125° 50' 36" E |
| Point (B) Lat 07° 14' 35" N | Long 125° 48' 21" E |
| Point (C) Lat 07° 15' 28" N | Long 125° 46' 43" E |
| Point (D) Lat 07° 14' 24" N | Long 125° 41' 34" E |

- C. A traffic lane for outbound traffic with a width of 1.5 kilometers is established between the separation line and a line connecting the following geographical positions:

| | |
|-----------------------------|---------------------|
| Point (A) Lat 07° 12' 51" N | Long 125° 42' 20" E |
| Point (B) Lat 07° 13' 40" N | Long 125° 46' 15" E |
| Point (C) Lat 07° 13' 12" N | Long 125° 47' 05" E |
| Point (D) Lat 07° 10' 00" N | Long 125° 48' 40" E |

VII. RULES AND REGULATIONS:

A. A vessel or ship navigating in the TSS shall:

1. Proceed within the appropriate traffic lane in the general established direction of traffic flow for that lane;
2. Keep clear of the traffic separation line or separation zone;
3. Navigate near the termination of the TSS with extreme caution;
4. Not engage in fishing or other recreational activities;
5. Not impede the passage of any vessel following the traffic lane;
6. If less than 20 meters in length or a sailing vessel shall not impede the safe passage of a power-driven vessel following the traffic lane;
7. If restricted her ability to maneuver and engaged in the maintenance of safety of navigation in the TSS, be exempted from complying with this rule to the extent necessary to carry out the operation;
8. If restricted in her ability to maneuver and engaged in laying, servicing or picking up of a submarine cable within TSS, be exempted from complying with this rule to the extent necessary to carry out the operation upon giving report or prior notice to PCG monitoring the TSS;
9. Steer toward a safe area and out of TSS and display the necessary lights during night time and shapes during daytime if due to defective propulsion, defective steering, inoperative navigation running lights, impaired maneuverability, defective navigational equipment and other similar condition, may impair its navigation, reduce its capabilities or affect the safety of other vessel.

10. Observe the speed limit of not exceeding 8 knots in Pakiputan Strait and 5 Knots in Talikud Strait and Northern Samal respectively, while navigating along the TSS.

B. A vessel or ship navigating outside the TSS shall:

1. So far as practicable join or leave a traffic lane at the termination of the lane, but when joining or leaving from either side, shall do so at as small an angle to the general direction of traffic flow;
2. Avoid traffic lanes, but if obliged to do so, shall cross on a heading as nearly as practicable at the right angle to the general direction of established traffic flow;
3. Not use an inshore traffic zone when she can safely use the appropriate traffic lane within the adjacent TSS. However, vessels or ships of less than 20 meters in length, sailing vessels and vessels engaged in fishing may use the inshore traffic zone;
4. Shall use the inshore traffic zone when en route to or from a port, offshore installation or structure, pilot station or any other place situated within the inshore traffic zone, or to avoid immediate danger, notwithstanding the provision of subparagraphs 1 and 2 above;
5. Not enter a separation zone or cross a separation line when joining or leaving a lane except in cases of emergency to avoid immediate danger;
6. Navigate near the terminations of TSS with particular caution;
7. Not anchor in or near the TSS, or in areas near the termination except in the designated anchorage area;
8. Avoid the TSS by as wide a margin as is practicable.

VIII. RECOMMENDATION TO MASTERS:

1. Pakiputan Strait TSS

- A. The Master of the vessel must follow the recommended course for vessels entering PSNSTSS from seaward in 000 °T.
- B. The Master of the vessel must follow the recommended course for vessels leaving Sasa Wharf (Precautionary Area) through the PSTSS is 214°T.

2. Northern Samal Island TSS

- A. The Master of the vessel must follow the recommended course for vessels entering NSITSS from seaward is 334°T.

- B. The Master of the vessel must follow the recommended course for vessels leaving Sasa Wharf (Precautionary Area) through the NSITSS is 078°T.

IX. PENALTY CLAUSE:

Violation of any provision in Paragraph VII shall be penalized as follows:

- A. First Offense: P100,000.00
B. Second Offense: P200,000.00
C. Third Offense: P300,000.00

X. SEPARABILITY CLAUSE:

Any section or provision of this Memorandum Circular held or declared unconstitutional or invalid by a competent court, shall not affect the other sections or provisions hereof and shall continue to be enforced as if the sections or provisions so annulled or voided had never been incorporated herein.

XI. REPEALING CLAUSE:


The provisions of existing Memorandum Circulars which are inconsistent with this Memorandum Circular are hereby modified accordingly.

XII. EFFECTIVITY:

This Memorandum Circular shall take effect fifteen (15) days after publication in the Official Gazette or in different newspapers of general circulation.


ARTEMIO MABU
ADM PCG
Commandant, PCG

Approved by:


JAIME J. BAUTISTA
Secretary, DOTr

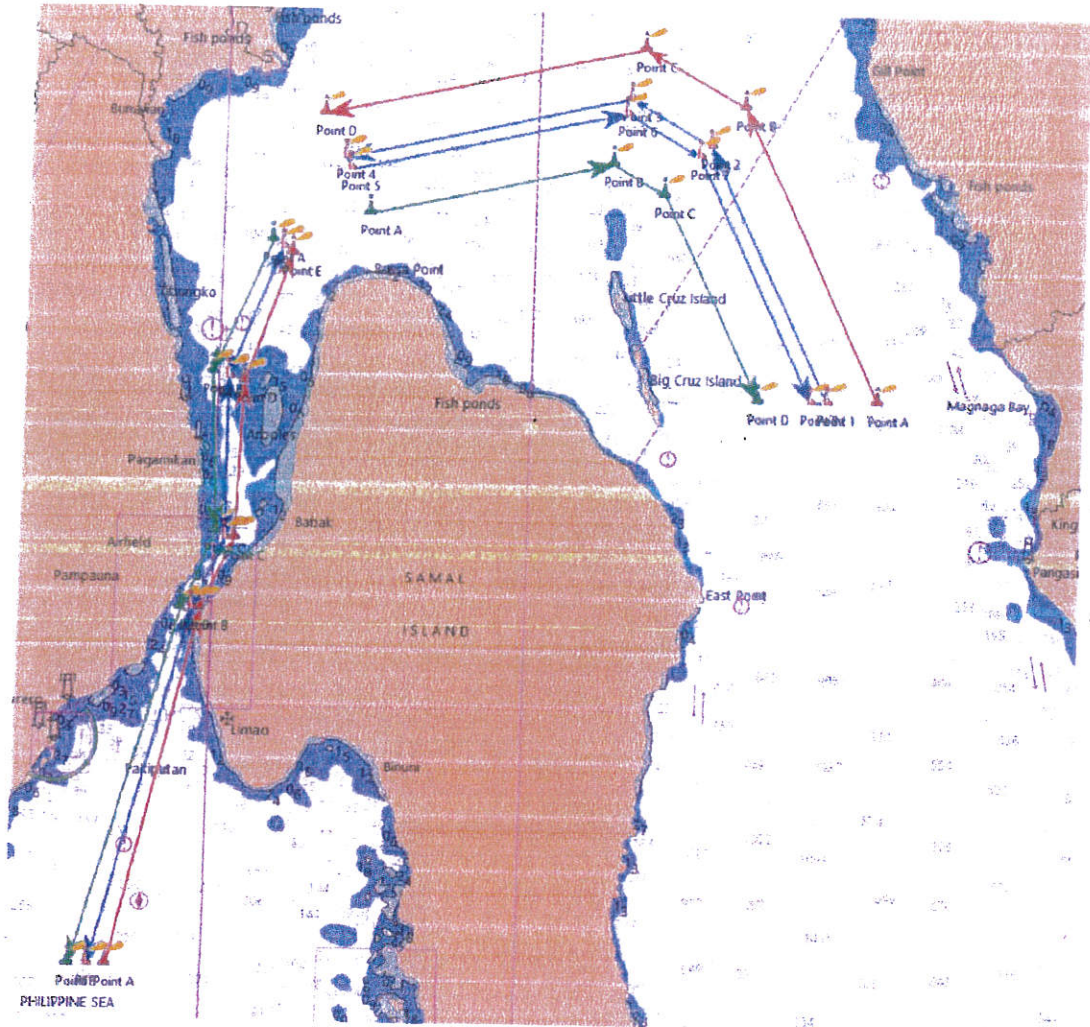


- Annexes: A – Traffic Separation Scheme Chart
B – Pakiputan Strait Traffic Separation Scheme
C – Northern Samal Island Traffic Separation Scheme

Establishing the Pakiputan Strait and Northern Samal Island Davao Traffic Separation Scheme (PSNSTSS) and Prescribing the Rules for its Use

Annex A

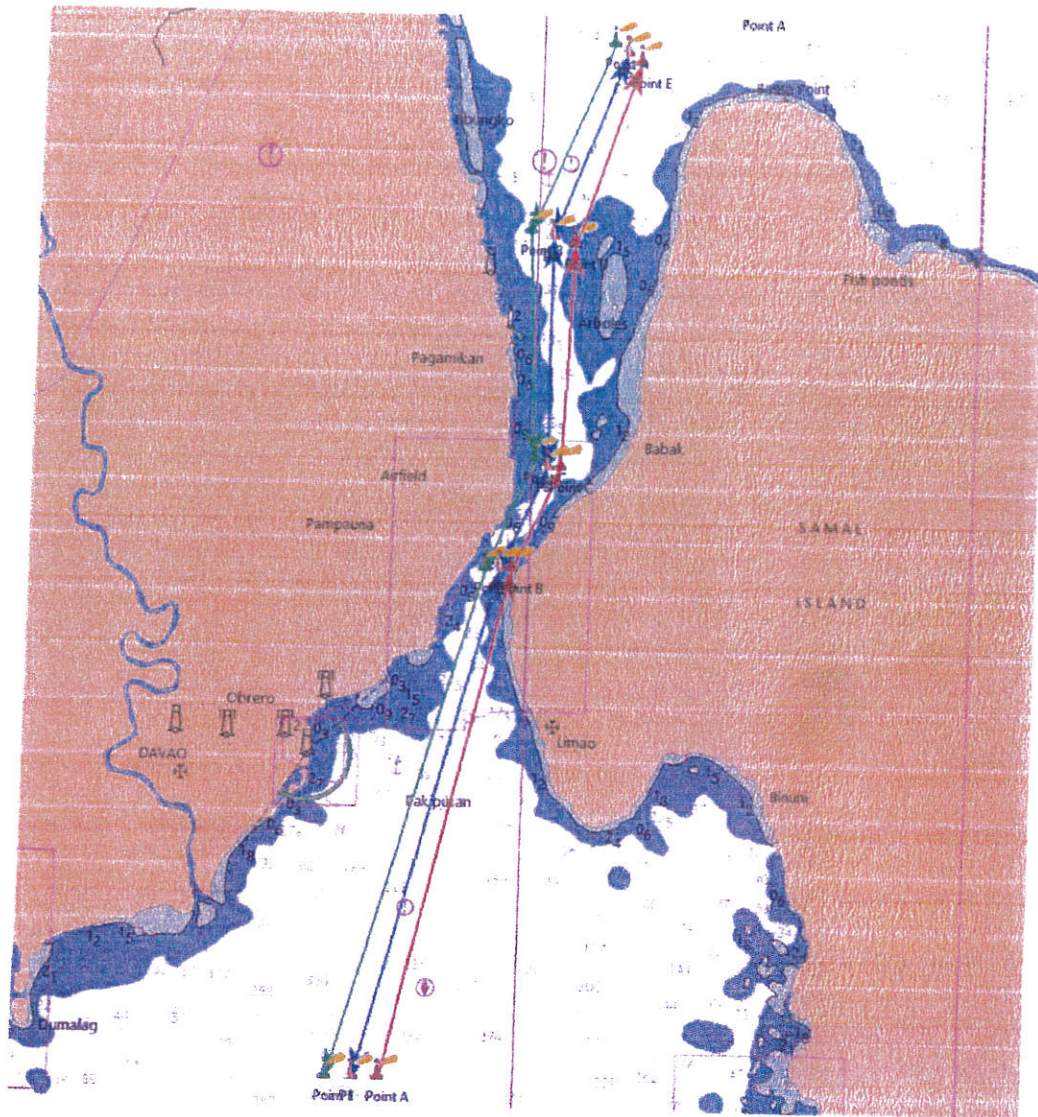
Traffic Separation Scheme Chart



Establishing the Pakiputan Strait and Northern Samal Island Davao Traffic Separation Scheme (PSNSTSS) and Prescribing the Rules for its Use

Annex B

Pakiputan Strait TSS



Pakiputan Strait TSS - Traffic Separation Line

- | | |
|------------------------------------|--------------------------|
| ➤ Point (1) Latitude 07° 01' 00" N | Longitude 125° 38' 12" E |
| ➤ Point (2) Latitude 07° 06' 37" N | Longitude 125° 39' 41" E |
| ➤ Point (3) Latitude 07° 07' 44" N | Longitude 125° 40' 11" E |
| ➤ Point (4) Latitude 07° 10' 16" N | Longitude 125° 40' 10" E |
| ➤ Point (5) Latitude 07° 12' 18" N | Longitude 125° 40' 57" E |

Pakiputan Strait TSS - Inbound Traffic Lane with a width of 280 meters

- Point (A) Latitude 07° 01' 00" N Longitude 125° 38' 30" E
- Point (B) Latitude 07° 06' 37" N Longitude 125° 39' 49" E
- Point (C) Latitude 07° 07' 44" N Longitude 125° 40' 20" E
- Point (D) Latitude 07° 10' 12" N Longitude 125° 40' 25" E
- Point (E) Latitude 07° 12' 12" N Longitude 125° 41' 06" E

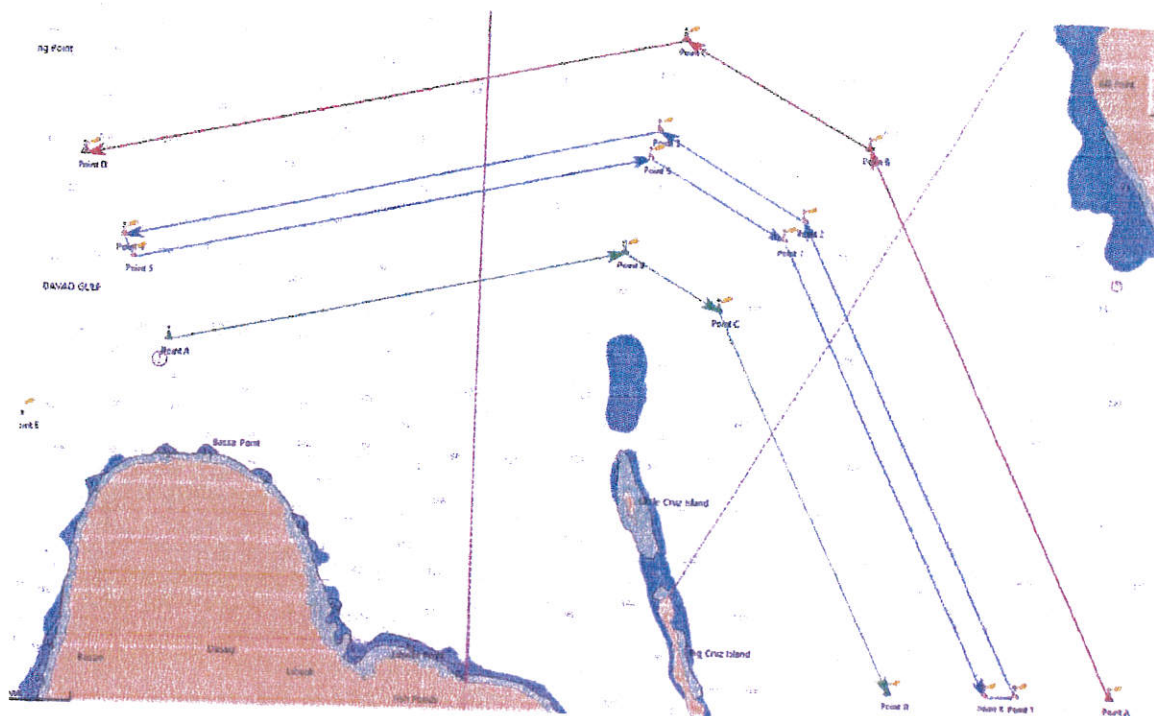
Pakiputan Strait TSS – Outbound Traffic Lane with a width of 280 meters

- Point (A) Latitude 07° 12' 24" N Longitude 125° 40' 48" E
- Point (B) Latitude 07° 10' 20" N Longitude 125° 39' 55" E
- Point (C) Latitude 07° 07' 50" N Longitude 125° 40' 02" E
- Point (D) Latitude 07° 06' 37" N Longitude 125° 39' 31" E
- Point (E) Latitude 07° 01' 00" N Longitude 125° 37' 54" E

Establishing the Pakiputan Strait and Northern Samal Island Davao Traffic Separation Scheme (PSNSTSS) and Prescribing the Rules for its Use

Annex C

Northern Samal Island TSS



Northern Samal Island TSS - Traffic Separation Line

| | |
|-----------------------------------|--------------------------|
| ➤ Point (1) Latitude 07°10' 00" N | Longitude 125° 49' 46" E |
| ➤ Point (2) Latitude 07°13' 58" N | Longitude 125° 47' 48" E |
| ➤ Point (3) Latitude 07°14' 42" N | Longitude 125° 46' 31" E |
| ➤ Point (4) Latitude 07°13' 43" N | Longitude 125° 41' 55" E |
| ➤ Point (5) Latitude 07°13' 32" N | Longitude 125° 42' 00" E |
| ➤ Point (6) Latitude 07°14' 28" N | Longitude 125° 46' 27" E |
| ➤ Point (7) Latitude 07°13' 48" N | Longitude 125° 47' 38" E |
| ➤ Point (8) Latitude 07°10' 00" N | Longitude 125° 49' 30" E |

Northern Samal Island TSS - Inbound Traffic Lane with a width of 1.5 kilometers

| | |
|-------------------------------|---------------------|
| ➤ Point (A) Lat 07° 10' 00" N | Long 125° 50' 36" E |
| ➤ Point (B) Lat 07° 14' 35" N | Long 125° 48' 21" E |
| ➤ Point (C) Lat 07° 15' 28" N | Long 125° 46' 43" E |
| ➤ Point (D) Lat 07° 14' 24" N | Long 125° 41' 34" E |

Northern Samal Island TSS - Outbound Traffic Lane with a width of 1.5 kilometers

- Point (A) Lat 07° 12' 51" N Long 125° 42' 20" E
- Point (B) Lat 07° 13' 40" N Long 125° 46' 15" E
- Point (C) Lat 07° 13' 12" N Long 126° 47' 05" E
- Point (D) Lat 07° 10' 00" N Long 125° 48' 40" E